

# RADIANT PANEL HEATERS

## TRANSIT SHELTER HEATING

- Non-Glowing
- Vandal Proof
- Weather Resistant
- Two- Stage Output



[www.heatray.com](http://www.heatray.com)

Australia	+6 141.286.7636
Canada	+1 604.815.4084
United States	+1 650.212.4442

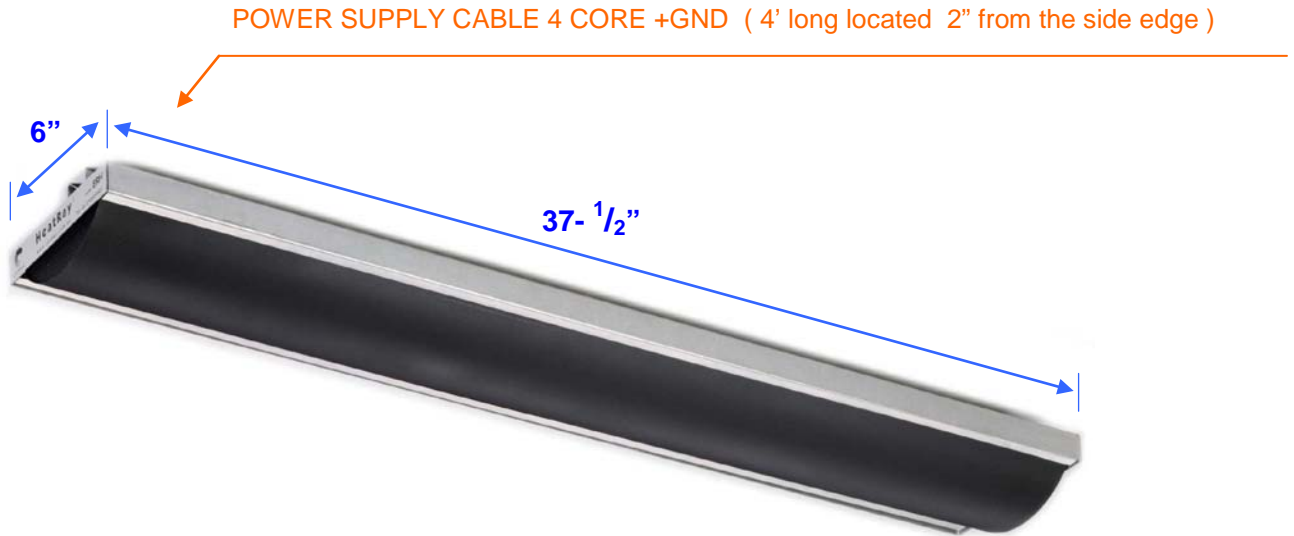
# Model ERH G3 1200

# PRODUCT DATA SHEET

## OVERHEAD RADIANT HEATER

Outdoor and indoor use. Moisture resistant to IPX5, UL & CSA Listed  
NON-Visible low intensity Mid-Infrared energy output.

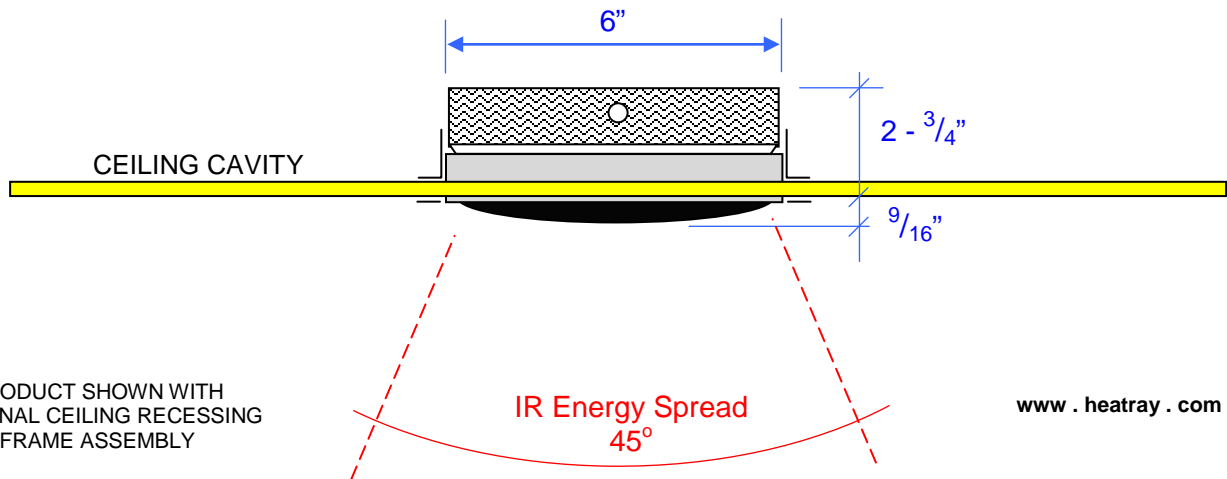
Suitable for general and close proximity heating applications.  
Available in under beam, ceiling recessed or wall mounted versions.



## Electrical Data

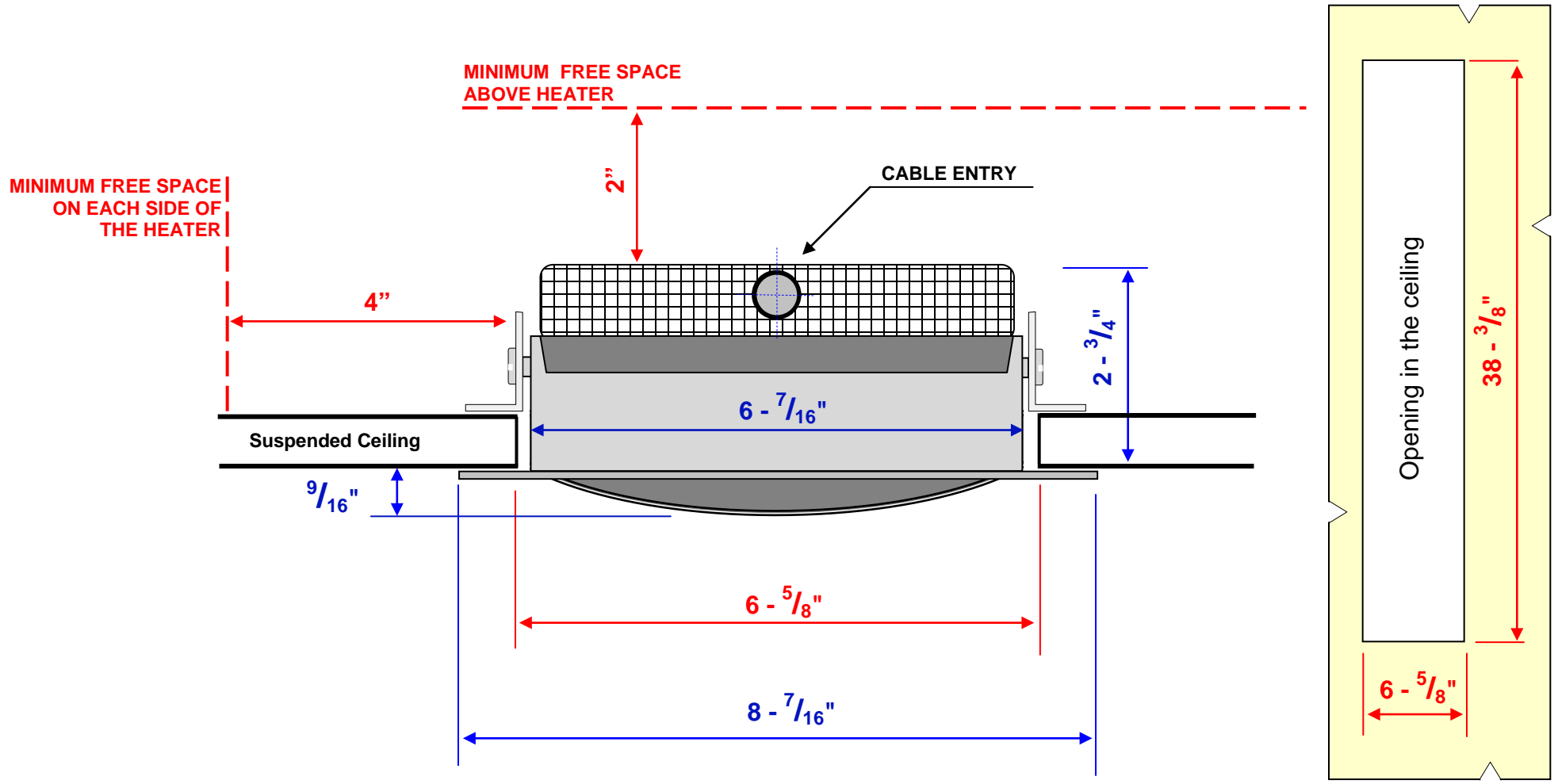
120 V, Single Phase, 60 Hz IP X5, Double Stage Heating

Heating Stage 1	600 W	5 Amp
Heating Stage 2	600 W	5 Amp
TOTAL POWER	1200 W	10 Amp

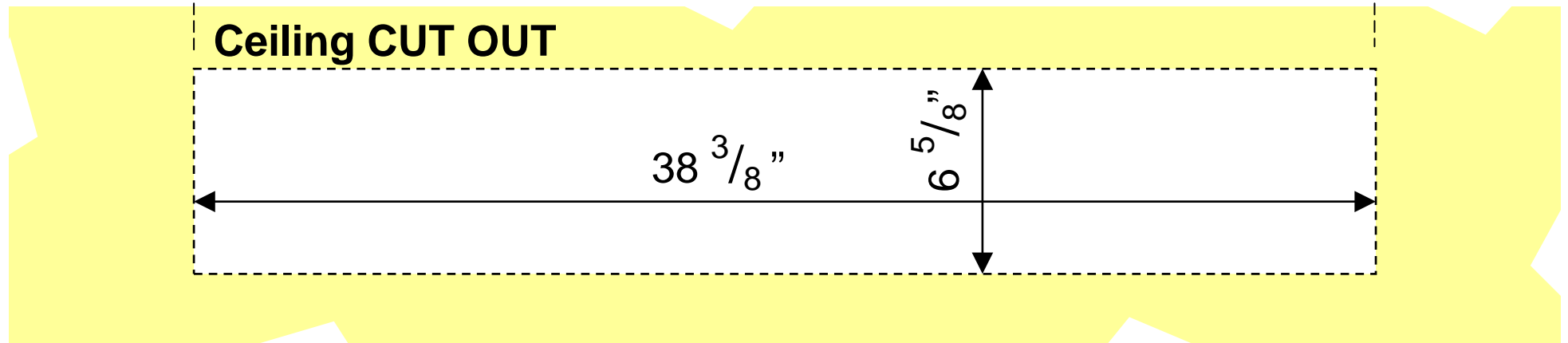
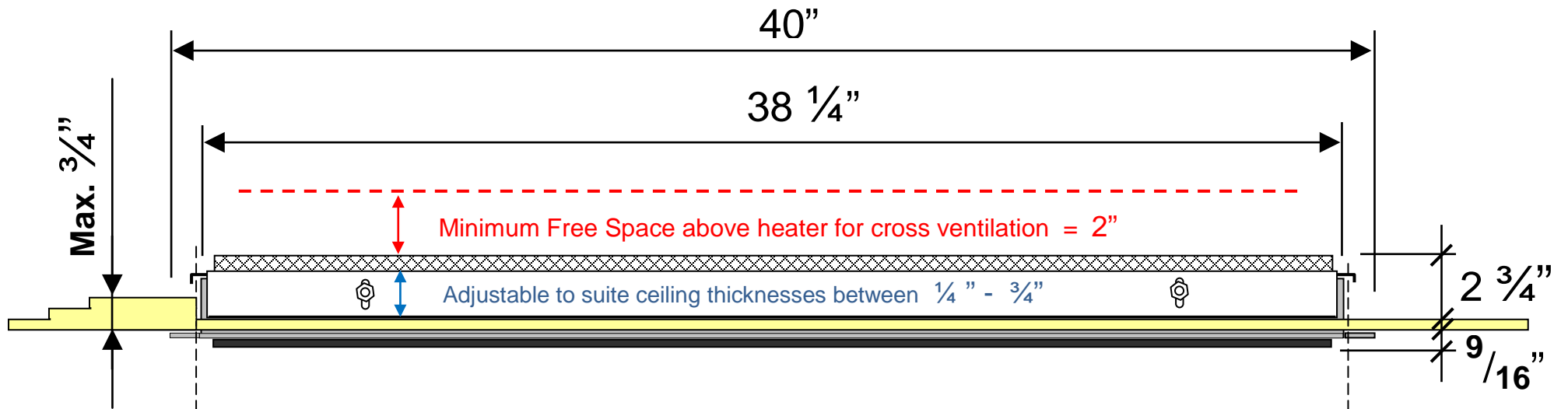


PRODUCT SHOWN WITH  
OPTIONAL CEILING RECESSING  
FRAME ASSEMBLY

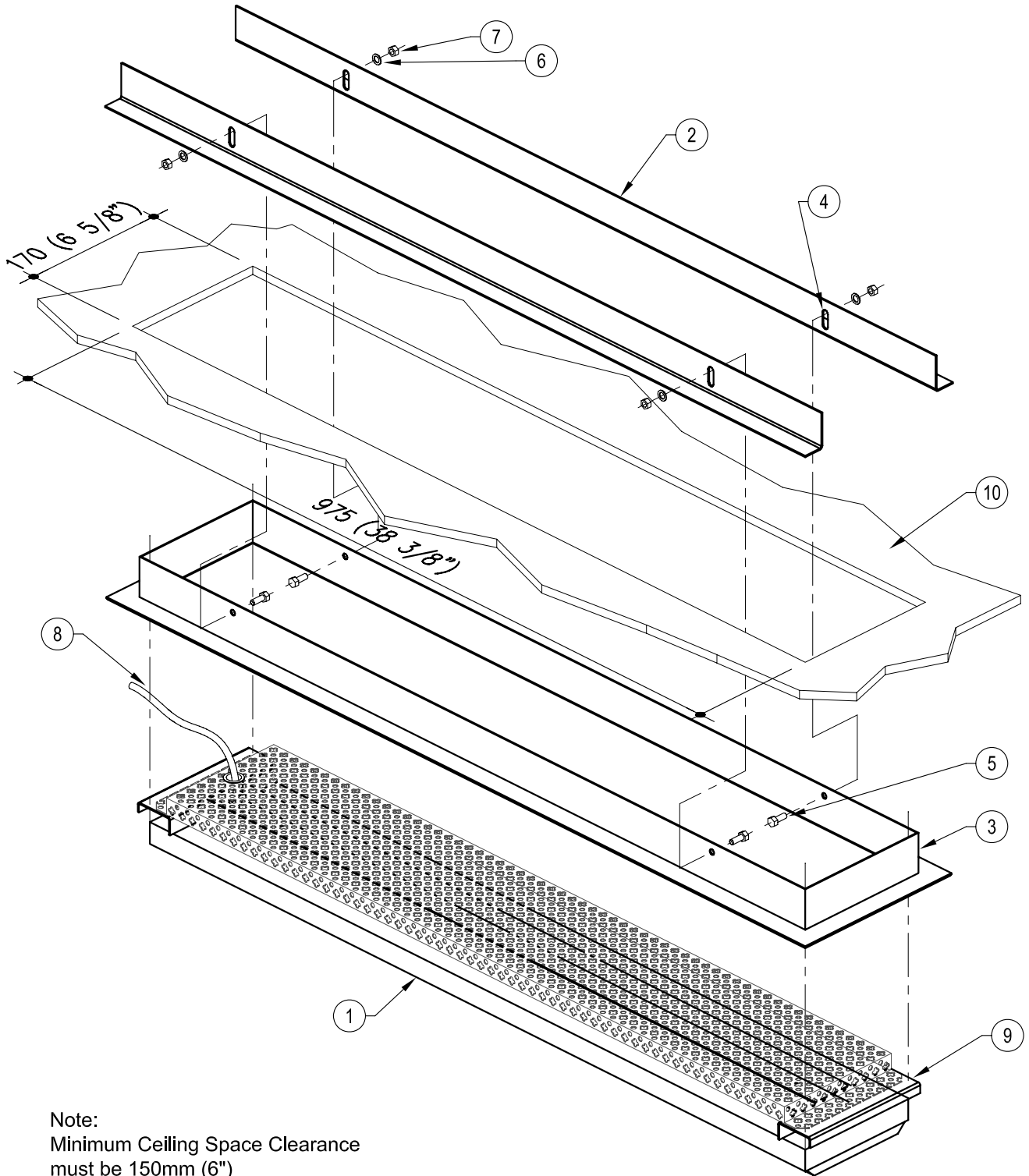
[www.heatray.com](http://www.heatray.com)



NOT TO SCALE

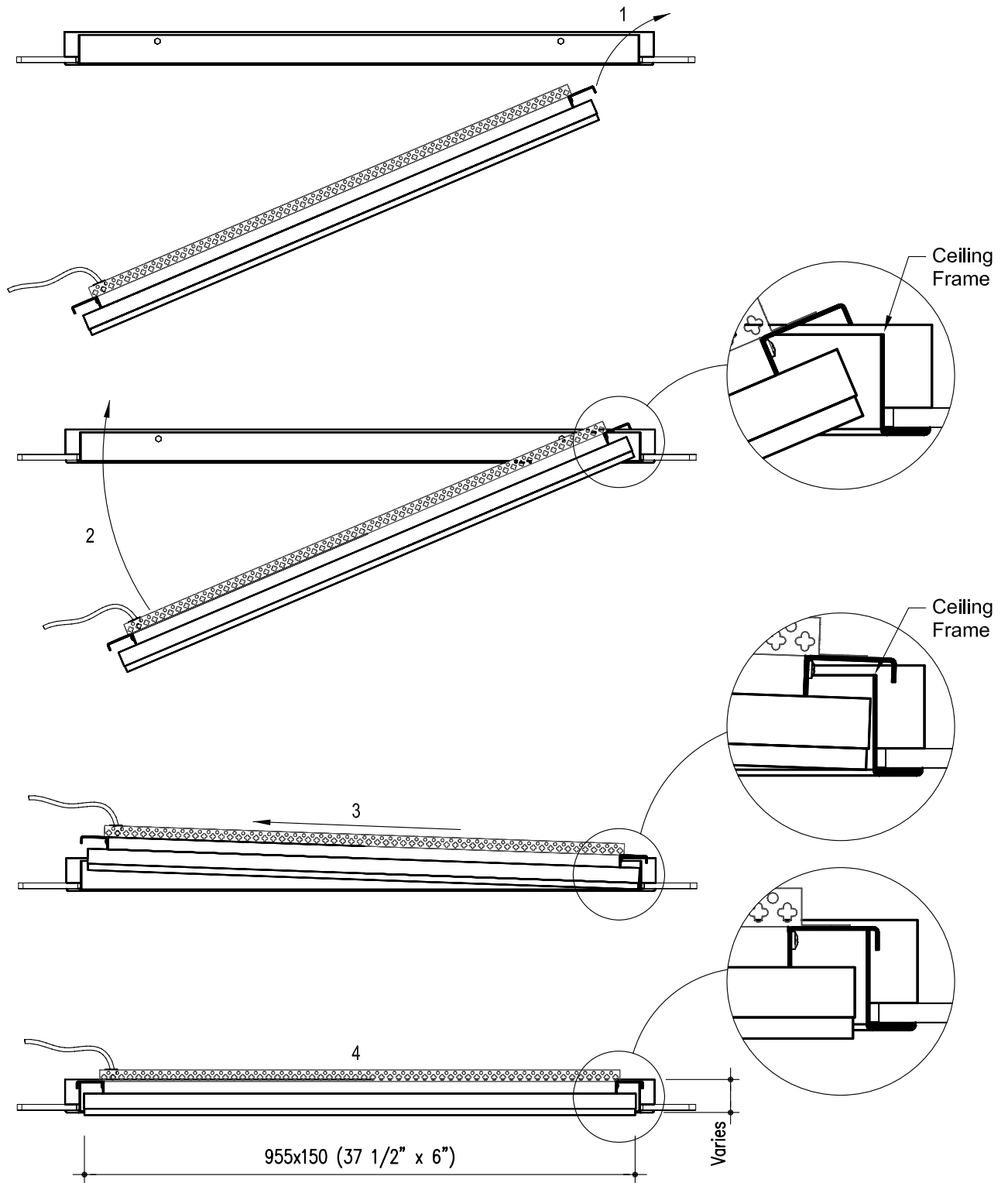


NOT TO SCALE



Note:  
Minimum Ceiling Space Clearance  
must be 150mm (6")

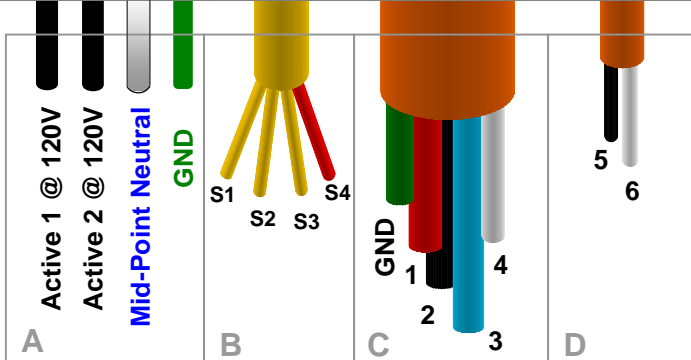
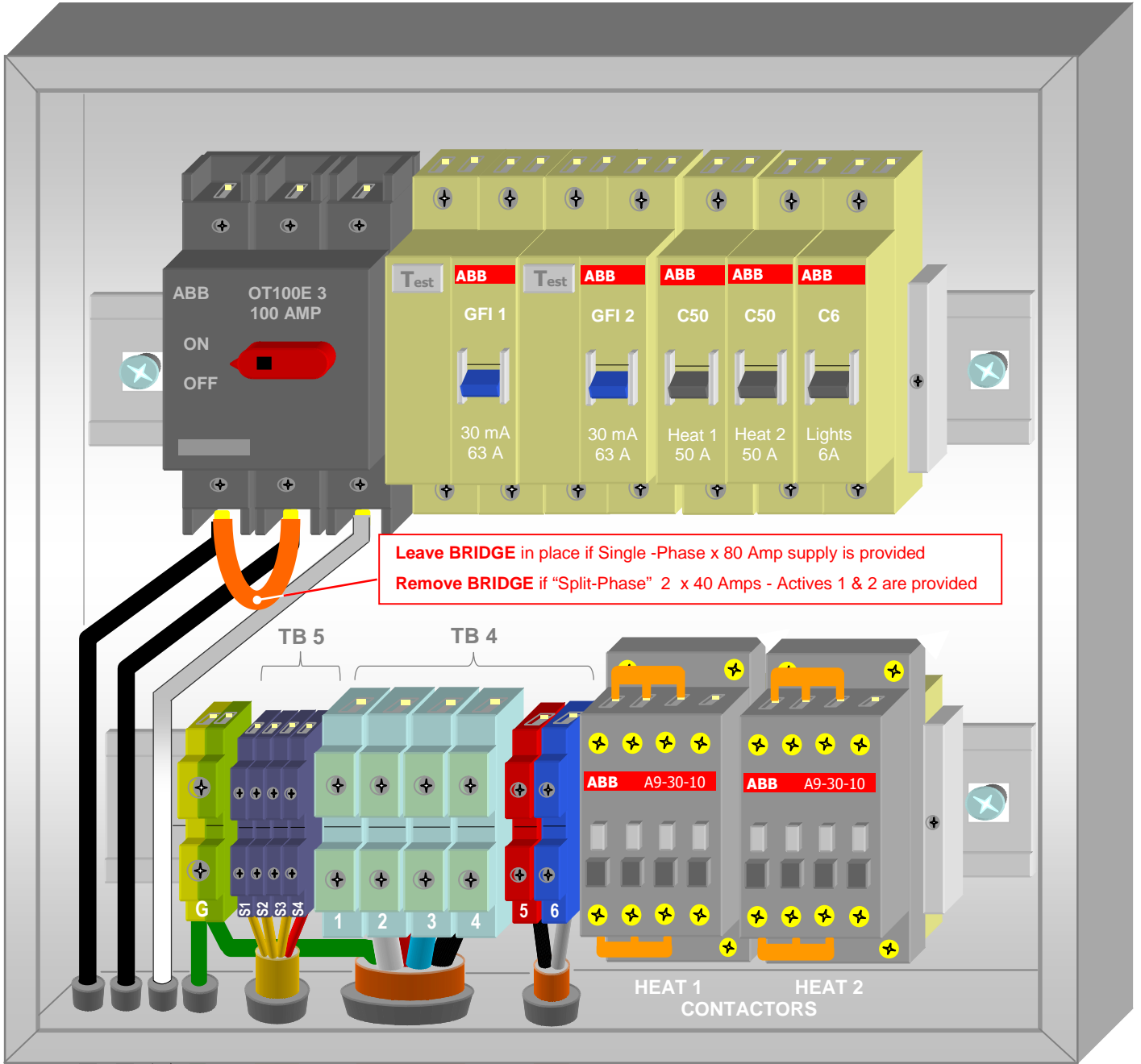
ITEM No.	DESCRIPTION	ITEM No.	DESCRIPTION
1	ERH Heater	6	Washer
2	Ceiling Securing Angles	7	Fixing Nut
3	Ceiling Frame	8	Power Cable (4 Core + Gnd)
4	Slotted Fixing holes	9	Heater Hanging Bracket
5	Fixing Bolts 4-off	10	Cut hole in Ceiling 38 3/8" x 6 5/8"
Note:	Suitable for ceiling height 8' - 9'		



ITEM No.	DESCRIPTION
1	Install ceiling frame.
2	Hook unit onto end of ceiling frame and push it against the frame to lift other end over frame.
3	Pull unit over to hook other end onto ceiling frame.
4	Ensure both ends are securely hooked over both ends of ceiling frame and centre the unit.

# CONTROL MODULE Model CM-8 US ( 120 V only )

1-Phase x 80 Amp or "Split - Phase" 2 x 40 Amp  
( 2-wire Single Phase or 3-wire Split Phase with Mid-Point Neutral )



### DIMENSIONS OF ENCLOSURE

Model CM-8 US  
Height = 16"  
Width = 12"  
Depth = 7 1/2"

SITE WIRING - A	SITE WIRING - B	SITE WIRING - C	SITE WIRING - D
<b>SUPPLY CONDUCTORS FROM THE MAIN'S PANEL</b> <b>Conductor rating</b> Active 1 = min. 50 A Active 2 = min. 50 A Neutral = min. 50 or 100A Ground = as per local wiring Code	<b>Terminal Block TB5</b> <b>CABLE TO REMOTE CONTROL DRY SWITCHES</b> 4 Core - 16 AWG S1. Return from Logic Switch "Heat 1" S2. Return from Logic Switch "Heat 2" S3. Return from Logic Switch "Lights" S4. Common Active 120V	<b>Terminal Block TB4</b> <b>CABLE TO "HeatRay" HEATERS</b> 4 Core plus Ground Min. rating 50 Amp 1. Ah1 - ACTIVE heat stage 1 2. Ah2 - ACTIVE heat stage 2 3. Nh1 - NEUTRAL heat stage 1 4. Nh2 - NEUTRAL heat stage 2	<b>Terminal Block TB 4</b> <b>CABLE TO Lighting or Auxiliary Circuit</b> 2 Core - 16 AWG 5. AL - ACTIVE 6. NL - NEUTRAL

